

COMPANY PROFILE

Dedicated and committed to professional and impeccable service and advice, In-Situ Consulting is able to assist its clients in assessing, analyzing and evaluating resources, and management of these resources in a responsible manner to ensure sustainability. Its personnel are highly qualified and has extensive field experience in the various disciplines of groundwater exploration, exploitation and management. Furthermore In-Situ offers geotechnical services in order to classify physical and chemical characteristics of soil and rocks for designing earthworks and proposed structures, or to support the repair of distressed earthworks/structures caused by subsurface issues. Its growing client base includes government institutions, local and regional authorities, consulting engineering firms, mining companies and corporations, consulting and contracting companies and private individuals. We are proud to be associated with our sister company In-Situ Groundwater Services which offers borehole testing services.



CONTACT DETAILS

In-Situ Consulting CC

P.O. Box 26280

Nelspruit

1213

1 Mandulia Street

West Acres

Nelspruit

1200

Telephone No: (013) 741 5158

Facsimile No: (013) 741 4043

Mobile: 072 021 1050 (Aubrey)

082 847 4533 (Ronell)

E-mail: insitugw@xsinet.co.za

admin@insituconsulting.co.za

Website: www.insituconsulting.co.za

Geohydrological & Geotechnical Consultants:

Offering a full consulting service aimed at investigating, developing and maintaining sustainable groundwater sources. Furthermore we offer comprehensive geotechnical investigations for infrastructure development.

Consultancy Services Offered

- Groundwater Resource Studies
- Community Water Supply
- Geological & Geophysical investigations
- Drilling & Testing Supervision
- Water Quality Assessment
- Groundwater Monitoring
- Well field planning & Design
- Strategic Planning for Future Source Development
- Geotechnical Foundation Investigation of Housing Developments
- Geotechnical Centerline Soil Surveys and Borrow Pit Investigations
- Geotechnical Foundation Investigations for Power Line Construction
- Geotechnical Core Drilling
- Geotechnical Foundation Investigations for EIA's
- Project Coordination & Administration
- Data analysis & Recommendations
- Database Management & GIS
- Aquifer monitoring & management
- Hydrocensus
- Water use and registration

Key Personnel:

- Member/Managing Director/Geohydrologist/Geologist—
Aubrey Meyer (B-Tech Geol)
24 years experience in groundwater consulting industry.
12 years experience in eng. geology/Industrial geology
- Member Geohydrologist — Ronell Kotze (B.Sc Geology and B.ScHons. Geohydrology)
7 years experience in groundwater consulting industry
- Geotechnologist — Riaan Roos N.Dip (Geol)
24 years experience in groundwater consulting industry.
- Geohydrologist - Reinardt Raubenheimer (B.Sc Geology and B.Sc Hons. Geology)
3 years experience in groundwater consulting industry
- Junior Geohydrologist - Chantel Weidemann (B.Sc Geography and B.Sc Hons. Geohydrology)
- Associated Engineering Geologist — Henry Schurink (B. Sc Hons Engineering Geology)
>30 year experience in engineering geology
- Associated Senior Geohydrologist — Louis van der Walt (N.Dip Geology)
>30 years experience in groundwater consulting industry



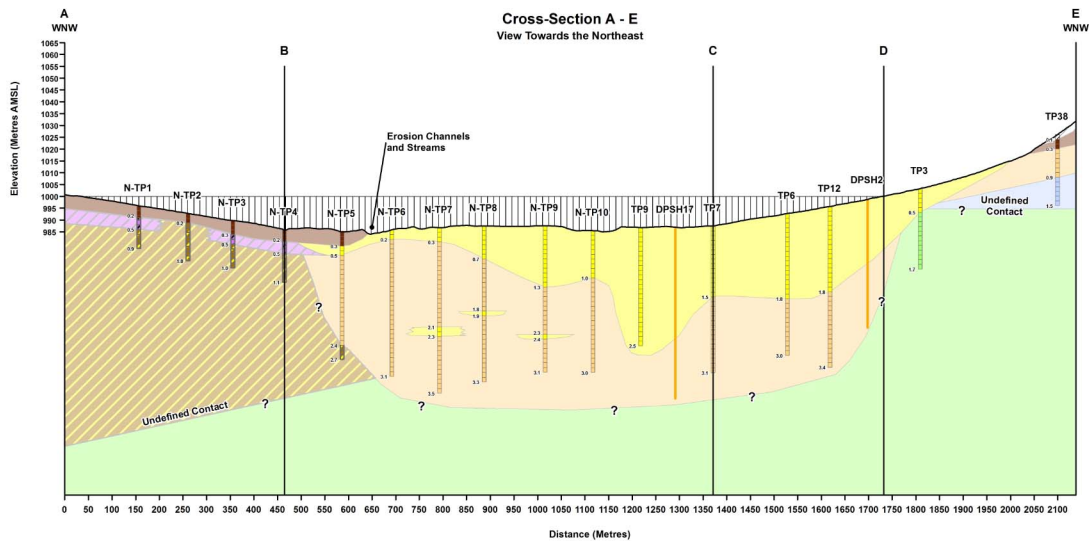
Geohydrological Projects Completed

- Geohydrological investigation and risk assessment at the upgraded Umjindi Municipality sewage works near Barberton.
- Groundwater source development in the Albert Luthuli Municipal Area
- Geohydrological investigation at “The Fountains” rural residential Township Development
- Groundwater source development at Nsikazi North/South
- Geohydrological investigation and risk assessment for the proposed Dayizenza filling station
- Groundwater investigation and development in the Blouberg Municipality:
 - Inveraan Village
 - Ga-Rawesi Village
 - Arrie Village
 - Makgari Village
- Groundwater assessment at Sonae Resin Plant, Panbult Mkhondo, Mpumalanga
- Groundwater assessment at Khanyazwe Substation, Mpumalanga
- Groundwater monitoring program at the following landfill sites:
 - Tekwane Regional Landfill
 - Lydenburg Regional Landfill
 - Burgersfort Regional Landfill
- Groundwater investigation and development in the following Municipalities:
 - Ehmalaheni Municipality Area
 - JS Moroka Municipality Area
 - Steve Tshwete Municipality Area
 - Thembisile Hani Municipality Area
 - Victor Khanye Municipality Area
 - Bushbuck Ridge Municipality Area
 - Thaba Chweu Municipality Area
 - Mbombela Municipality Area
 - Nkomazi Municipality Area
 - Umjindi Municipality Area
- Geohydrological investigations for the Ehlanzeni Municipality at Mananga, Masibekela and Shiyalangubo Villages
- Groundwater investigation and development in the Capricorn District Municipality:
 - Indermark Village
 - Nthabiseng Village
 - Senwabarwana Village
- Groundwater evaluation and development in the uThungulu/King Cetshwayo District Municipality:
 - uMlalazi
 - uMfolozi
 - Nkandla
 - Mthonjaneni
- Groundwater source development in the Kruger National Park
- Groundwater source evaluation and development at various schools in the Sekhukhune District Municipality.



Geotechnical Experience and Projects Completed

- Housing developments including preliminary, phase-1 and phase-2 investigations.
- Centerline soil surveys and borrow pit investigations in Kwa-Zulu Natal, Limpopo and Mpumalanga.
- Geotechnical foundation investigation and foundation classification according to Eskom specification TRMSCAAC1 revision 3 for construction of power lines.
- Centre line soil surveys for road construction/geotechnical.



- Slope stability and geotechnical core logging Kayelekera Mine Malawi.
- Orientation geotechnical core logging Nkomati Mine Dam.
- New tailings storage facility (TSF) for Two Rivers Platinum Mine
- Proposed new pavilion for the Nelspruit Municipal Swimming Pool at the van Riebeeckpark Sports Facility
- Proposed new Bapedi Agriculture pack house and Office Block.
- Proposed new wash bays at Vosloorus Fire Station
- Proposed Linbro Park Bulk Water Supply pipeline upgrade
- Geotechnical Investigation of the feasibility of repairing the Ntunda and Utah Dams

Depth (m)	Lithology Description	Construction	Chamber (mm)	Well Diagram	Equipment
0	Ground Surface	Steel Cap			
0 - 4	Moist, orange to reddish brown, loose to medium dense, fine to medium grained, silty sand with abundant gravels and scattered sandstone boulders. Imported material.	Concrete			
4 - 8	Light pinkish to light yellow and yellowish brown, completely weathered, fractured, fine to medium grained sandstone. (North Rukuru Formation)				
8 - 12	Dark brown, and orange brown bands of completely to highly weathered, very closely fractured, very fine to medium grained, interbedded sandstone and mudstone beds with silcrete nodules.		110		
12 - 16	Orange brown, light yellow to light grey with thin grey bands, speckled pink, white and grey, highly to medium weathered, very closely fractured, fine to medium grained arkose sandstone.				
16 - 24	Thin bands of light yellow, light greenish yellow, light grey, reddish to dark reddish brown, highly to medium weathered, very closely fractured, very fine to fine grained, very soft to soft rock mudstone, with thin interbedded sandstone bands and silcrete nodules. ("Red bed" mudstone, North Rukuru Formation)	Grout			Telescopic Section
24 - 40	Bands of dark brown, light yellow to light grey, highly to medium weathered, very closely fractured, medium to coarse grained, soft to medium hard rock arkose sandstone.		92		
40 - 48	Bands of dark brown, very dark brown, grey and reddish brown, slightly to unweathered, very closely fractured, very fine grained, very soft to soft rock mudstone with interbedded silcrete nodules. ("Red bed" mudstone, North Rukuru Formation, Kayelekera Member, Beaufort Group, Karoo Suite)				
48 - 52	Reddish brown to dark brown, medium to slightly weathered, closely fractured, fine to medium grained, soft rock sandstone. (North Rukuru Formation)				
52 - 60	Reddish brown to very dark brown, unweathered, widely fractured, very fine to fine grained, soft rock sandy mudstone.	Sludge			

Client Base:

CONSULTING ENGINEERS:

- MBB Consulting Engineers
- BKS Consulting Engineers
- Steward Scott Consulting Engineers
- Hawkins, Hawkins & Osborne
- VELA-VKE
- ER Africa
- GUBEVU Africa
- BSL Consulting Engineers
- Tumber Fourie
- Grinaker-LTA
- Kwezi V3

CONSULTANTS:

- VSA Group
- VSA Leboa Consulting
- Khulani Geoenviro Consultants
- Geomeasure Services
- Groundwater Consulting Services
- ERM Africa
- CGTS
- Hobbs Consulting
- MRH Consulting
- Geo3
- ENGEOCON
- Golder & Associates
- Aqua Terra (Australia)
- Bateman

CONSTRUCTION:

- Majocarbe Civil Construction
- Xylo Construction
- Agri Water
- Ntombini Investments
- Bomake Dlamini
- Masana Construction
- Trans Oos
- Ubuhlu Bethu Transport
- Dawson & Dobson
- Maditchaba Development
- Menlo-Gubha Construction

MINING:

- SASOL Mining
- FAB Erect Mining
- Kunga Granite
- XStrata Coal
- BHP Billiton
- Nkomati Mine
- Anglo Platinum (Rustenburg)

TRUSTS & FOUNDATIONS:

- The Mvula Trust
- SATAC (DRMC)
- SAB
- Ulusaba

GOVERNMENT:

- Department of Public Works
- Department of Health
- Department of Water Affairs & Forestry
- Department of Education

LOCAL GOVERNMENT:

- Ehlanzeni District Council
- Mbombela Municipality
- Emalahleni Municipality
- Umjindi Municipality,
- Albert Luthuli Municipality
- Naledi Municipality
- Nkomazi Municipality
- Mkhondo Municipality
- Msukaligwa Municipality
- Bushbuckridge Municipality

FARMS:

- Nova Sun Trust
- Lebombo Farms
- Tradequick
- Monsanto
- Ivaura Estates
- Llanwarne Estate
- Heidel Eggs